



# Annual School Report 2024



**Registration Address**

State Centre for Basketball,  
142 Rose Terrace, Wayville, 5034

**Postal Address**

State Centre for Basketball,  
142 Rose Terrace, Wayville, 5034

**Principal**

Matthew Daly

**Board Chair**

Dr. Jim Davies

**ABN**

70627262908

**Approved Authority AGEID**

85683

**E:** [admin@sc.sa.edu.au](mailto:admin@sc.sa.edu.au)

**P:** (08) 8151 0407

[sc.sa.edu.au](http://sc.sa.edu.au)

# Contents

<b>Section 01</b> <b>Principal's Address</b>	<b>04</b>
<b>Section 02</b> <b>College Overview</b>	<b>06</b>
<b>Section 03</b> <b>College Strategy</b>	<b>08</b>
<b>Section 04</b> <b>People</b>	<b>10</b>
<b>Section 05</b> <b>Community Pulse: Key Highlights</b>	<b>12</b>
<b>Section 06</b> <b>Finance</b>	<b>14</b>

# Principal's Address

**It is with great pride and enthusiasm that I present the annual report for Sports College South Australia (operating as SEDA College SA in 2024) for the last 12 months. The 6th year of our operations has been one of growth and achievement, and we have continued to strive for excellence in all aspects of our educational mission, albeit in a very different way to most other schools.**

Our strategic plan, "Changing the Game v1.0," has provided a clear roadmap for our progress. We have made significant strides in our four key areas of focus: Culture, Curriculum & Pedagogy, Organisation Design, and Wellbeing.

Our commitment to fostering a positive and inclusive culture is evident in the overwhelmingly positive feedback from both our parent and student surveys, as well as our staff feedback. Parents have expressed their satisfaction with the support and guidance provided by our dedicated teachers and mentors, while students have highlighted the engaging and supportive learning environment we have created, and staff have identified it as a desirable place to work.

In terms of curriculum and pedagogy, we have continued to embrace innovative approaches to learning, ensuring that our students are equipped with the skills and knowledge they need to thrive in the 21st century. The evolution of our trans-disciplinary approach has continued and is an authentic tool for engagement in learning, which we are confident will further enhance our students' educational experience, their learning and their pathways in the next stage of their development.

Our organisational design has evolved to support our growth and ensure that we can continue to provide a high-quality education to all our students. The implementation of new roles in preparation for

our next phase of growth has been established, and simultaneously, they have empowered our staff to enable them to deliver their best work too.

The well-being of our students and staff remains a top priority. Our data shows many positives about our young people's wellbeing because of our approach to learning. We have implemented a comprehensive well-being strategy with an incredibly well-credentialed team that provides support throughout the year, and we are proud of the positive impact this has had on our school community.

As we look to the future, we are excited about the opportunities that lie ahead. We will continue to build on our successes, embracing innovation and striving for excellence in all that we do. We are confident that SCSA will continue to be a leading example of a forward-thinking, student-centric learning community.

Thank you to all our families and partners for their ongoing support and commitment to our school. Together, we are changing the game.

Sincerely,



**Matthew Daly**  
Principal



# College Overview 2024

## A Unique Approach to Senior Secondary Education

At SCSA, we're dedicated to providing an educational experience that not only prepares students for fulfilling careers but also champions their personal growth and development.

As an independent, not-for-profit senior secondary school for Years 11 and 12, SCSA stands out with its distinctive educational model. Our innovative approach allows us to create learning environments where young people and adults thrive within premier sporting facilities across Metropolitan Adelaide.

## Unparalleled Access to the Sports Industry

With ten venues, we hold partnerships with leading South Australian sporting organisations to offer students unparalleled access to the sports industry. Our partners included:

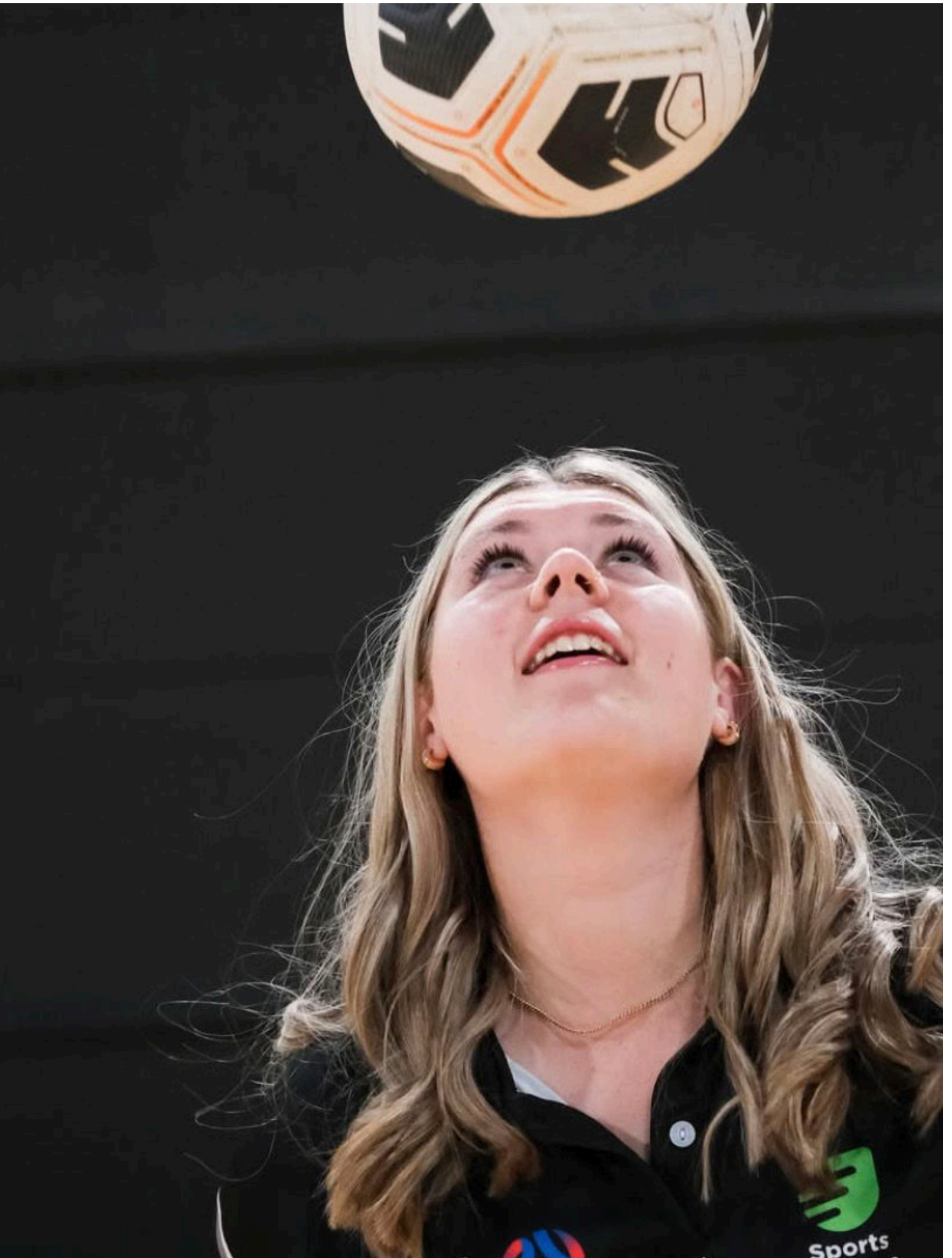
- Adelaide Crows FC
- South Australian Cricket Association and Adelaide Strikers
- Netball SA and Adelaide Thunderbirds
- Basketball SA, Adelaide Lightning, and the Adelaide 36ers
- Adelaide United and Football SA

## Our History and Curriculum

SCSA gained independent school status in 2018 and welcomed our first students in 2019. We've been a proud member of the Association of Independent Schools South Australia (AISSA) ever since.

Our integrated curriculum seamlessly blends the South Australian Certificate of Education (SACE) with Vocational Education and Training

(VET). While we faced the challenge of not being able to offer School-based Apprenticeships and Traineeships (SBATs) in 2024, our dedicated teams collaborated to find other genuine ways to combine real-world learning alongside a deeper focused Project-based Learning approach, ensuring an authentic and engaging experience for our students.



## College Strategy

Sport College SA's strategic plan, **“Changing the Game v1.0,”** is a **bold vision** for the future of senior secondary education. It is built on four key pillars: **Culture, Curriculum & Pedagogy, Organisation Design, and Wellbeing.**

The plan aims to create a culture that is enthusiastic about and engaged in radical improvement, innovation, and change. This will be achieved by empowering staff and students to take ownership of their learning journey and by fostering a growth mindset throughout the college community.

In terms of curriculum and pedagogy, the plan envisions a forward-thinking, student-centric approach that is highly customised and engaging. This will involve co-creating learning experiences with students, incorporating real-world opportunities, and utilising technology to enhance engagement and connection.

The organisation design will be focused on efficiency and effectiveness, empowering individuals and teams to be their best. This will involve creating structures and processes that support innovation and collaboration, as well as fostering a culture of professional learning and growth.

Wellbeing is a central focus of the strategic plan, with a commitment to empowering every individual to thrive. This will be achieved through a comprehensive wellbeing strategy that addresses both physical and mental health, as well as fostering a sense of connection and belonging within the college community.

The plan also outlines a strategy for controlled growth, with a focus on strengthening existing partnerships and exploring new ones. This will ensure that the college can continue to provide high-quality education to a growing number of students while maintaining its unique focus on the sports industry.

**Looking to the future, SCSA is committed to ongoing innovation and is exploring opportunities for further expansion.**



## Section 04

# People

## Student Information

### Student Information 2024

Students	Number
Male	211
Female	105
Year 11	180
Year 12	136
Indigenous	15

## Staff Information

### Workforce Profile & Qualification Status

Role	FTE
Teaching Staff	16.8
Teaching Staff >10 years' experience	7

Qualification	Number
Master's Degree	2
Bachelor's Degree	18

### Whole School Attendance

Students Attendance (>90%) 52%

Students Attendance (80% - 89%) 32%

Student Attendance (70% - 79%) 8%

Students Attendance (<70%) 8%

### Student Completion Data

SACE Completion 2024 96%

Long-term mean SACE completion 99%

SACE completion where VET is  
successfully completed 100%





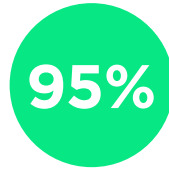
# Community Pulse: Key Highlights



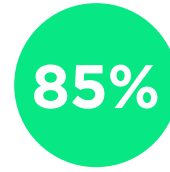
**Students feel supported by their mentors' wellbeing focus.**



**Parents agree a positive culture is vital for student wellbeing.**



**Students feel supported by their mentors' wellbeing focus.**

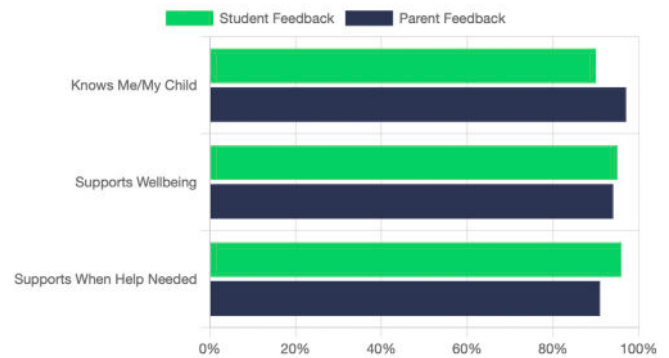


**Students find project-based learning relevant and engaging.**

## Strong Staff-Student Relationships

Positive relationships are the bedrock of the SCSA experience. The data reveals a strong consensus between students and parents that our teachers and mentors are successfully creating a supportive, personal, and encouraging environment. This connection is fundamental to both academic engagement and personal wellbeing.

The chart shows the combined 'Agree' and 'Strongly Agree' responses, highlighting the powerful alignment in perception. Both groups overwhelmingly feel that staff know the students, support them, and provide help when needed.



## Student Experience: Key Strengths

Qualitative feedback highlights the significant positive impacts of our experiential learning model and strong support systems

**Experiential Learning:** Structured Workplace Learning (SWL) and Community Workdays are highly valued for skill development and career exploration.

**Confidence Building:** Delivering student-led clinics successfully boosts confidence in communication and coaching skills.

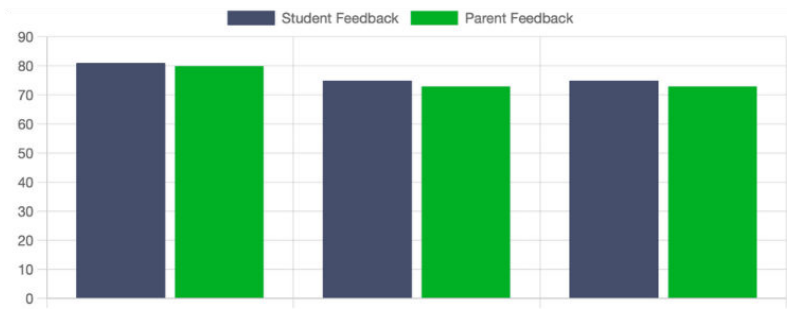
**Pathway Support:** Many parents and students feel well-supported in their pathway planning and career guidance.



# The Learning Experience

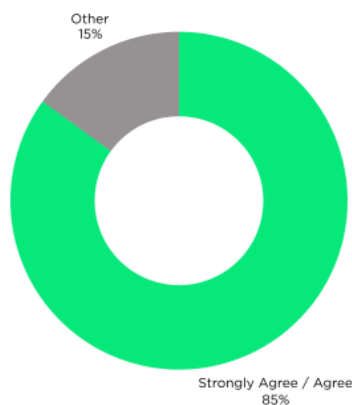
## Engagement & Agency in Learning

Our project-based learning model is a cornerstone of the curriculum, and the feedback confirms it success. Both students and parents report that this approach fosters a more relevant and engaging educational experience. Furthermore, a high percentage of students feel they have control over their learning journey, a key factor in developing independent, lifelong learners.

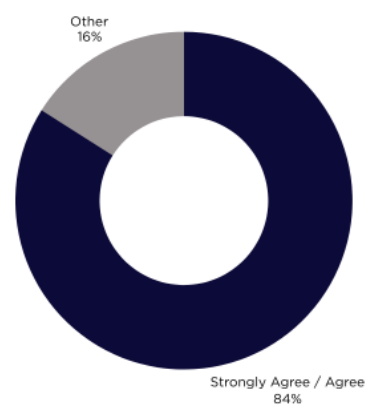


### Project-Based Learning leads to relevant & engaging experience

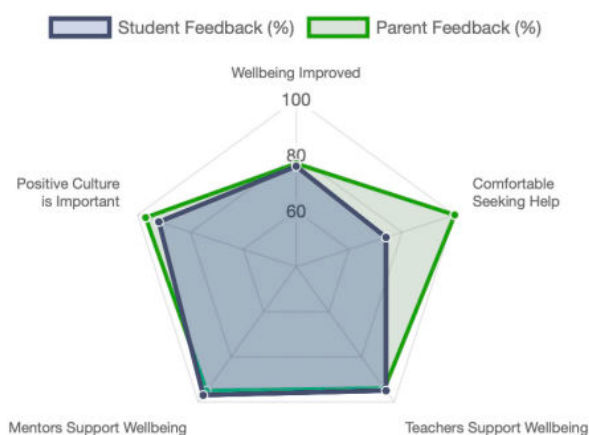
#### Student View



#### Parent View



## A Holistic Focus on Wellbeing



At SCSA, student wellbeing is a top priority, integrated into our culture and curriculum. Feedback from both students and parents shows a strong positive trend, with a significant majority reporting that student wellbeing has improved since joining the college. This is supported by the high value placed on a positive venue culture and the strong support provided by both teachers and mentors.

The radar chart compares key wellbeing indicators, showing a tight and positive alignment between student feelings and parent observations, reinforcing the success of our holistic support systems.

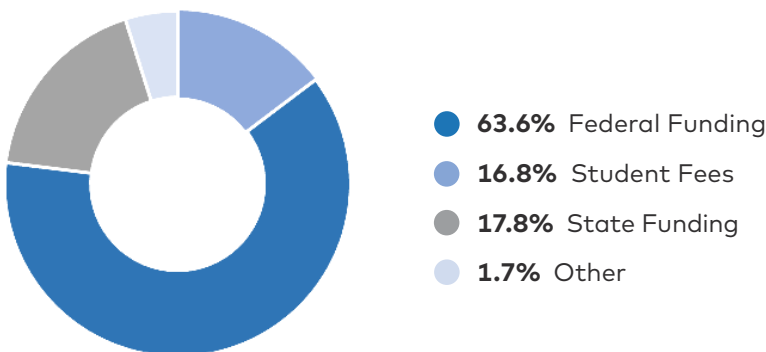
# Finance

The following provides percentage amounts of both income and expenditure for the 2024 academic year.

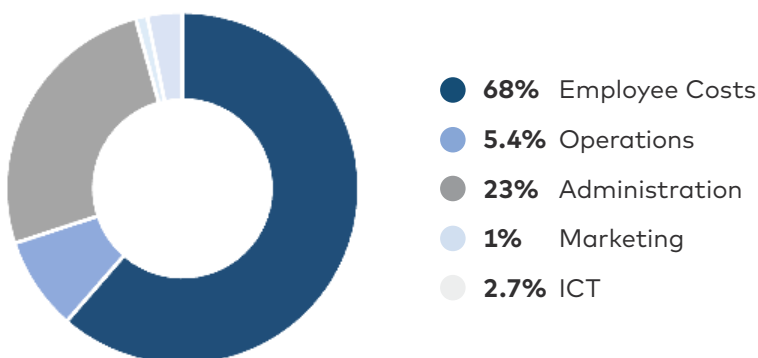
Sports College South Australia delivers a broad and engaging education that empowers students through real-world learning and strong industry connections. The College is committed to delivering exceptional value for money by aligning its educational offerings with meaningful outcomes for every young person.

Financial management at the College prioritises efficiency and effectiveness, ensuring that every dollar spent contributes directly to student learning, wellbeing, and future readiness. Strategic and operational decisions are made with a focus on optimising impact, supporting the College’s mission to change the game for young people through inclusive, innovative, and high-performance education.

## College Income



## College Expenditure







[sc.sa.edu.au](http://sc.sa.edu.au)